

# GOODWE



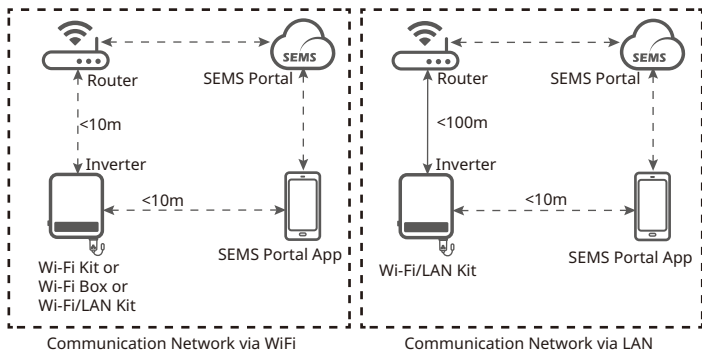
## Quick Installation Guide

### Smart Dongle

(Wi-Fi/LAN Kit & Wi-Fi Kit & Wi-Fi Box)

V1.6-2023-12-25

## 01 Applications



## 02 Installation

### Packing List



Or



Or



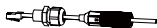
Wi-Fi Kit x 1

Wi-Fi Box x 1

Wi-Fi/LAN Kit x 1



User Manual x 1

Wire Harness  
x 1 <sup>[1]</sup>5-pin USB adapter  
x 1 <sup>[2]</sup>Screw x 4 <sup>[2]</sup>

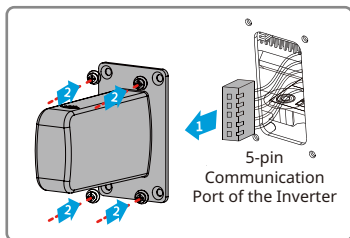
[1]: For Wi-Fi/LAN Kit only.

[2]: Wi-Fi Kit and Wi-Fi/LAN Kit: Optional.

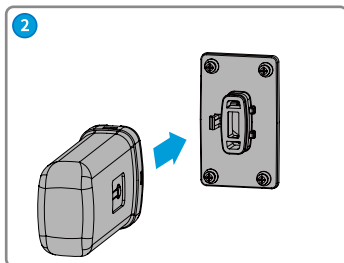
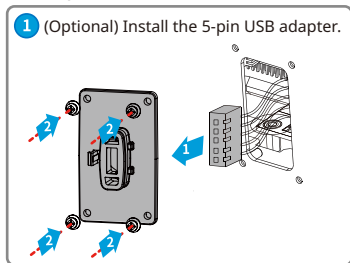
## Installing the module

**Note:** This device should be installed and operated with a minimum distance of 20 cm between the radiator and your body.

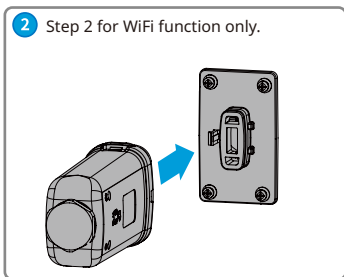
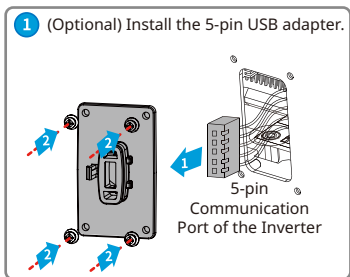
### Wi-Fi Box



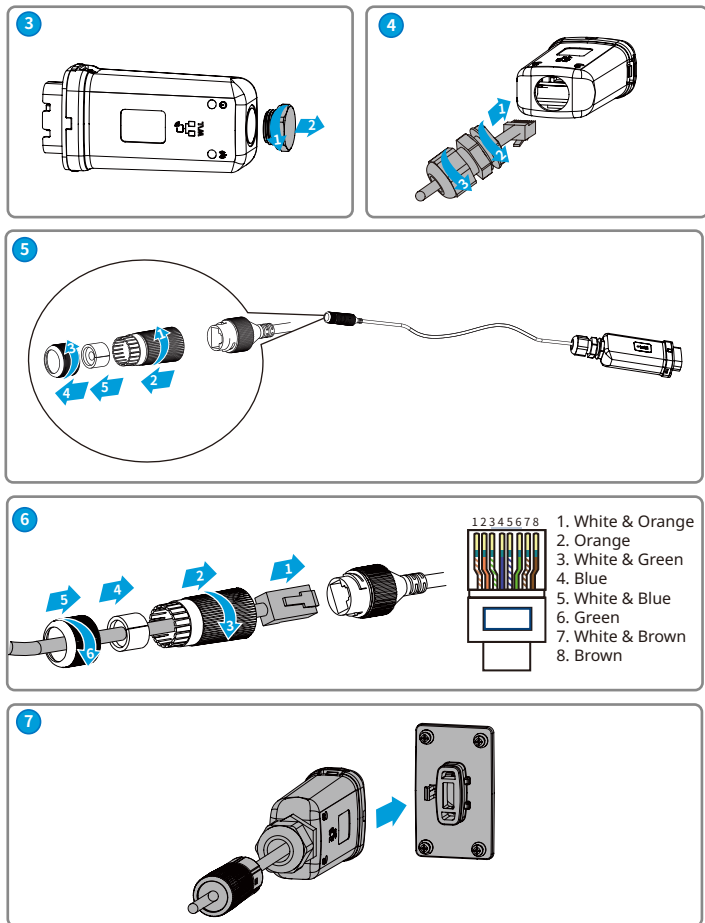
### Wi-Fi Kit



### Wi-Fi/LAN Kit



## Step 3 - Step7 for LAN function only.





### 03 Power On

**Step 1** Power on the inverter.



**Step 2** Power on the router.

**Step 3** Check the indicators on the Kit and the inverter to confirm the communication status of the kit.

#### Wi-Fi/LAN Kit

Indicator	Color	Status	Description
 Power	Green	ON	The Wi-Fi/LAN Kit is powered on.
		OFF	The Wi-Fi/LAN Kit is restarting or not powered on.
 COM	Blue	ON	<ul style="list-style-type: none"> <li>WiFi Mode: WiFi/LAN Kit is connected to the router.</li> <li>LAN Mode: WiFi/LAN Kit is connected to router or AP hotspot is connected.</li> </ul>
		OFF	<ul style="list-style-type: none"> <li>WiFi Mode: WiFi/LAN Kit is not connected to the router.</li> <li>LAN Mode: WiFi/LAN Kit is not connected to router or AP hotspot is not connected.</li> </ul>

#### Wi-Fi Kit

Indicator	Color	Status	Description
 Power	Green	ON	The Wi-Fi Kit is powered on.
		OFF	The Wi-Fi Kit is restarting or not powered on.
 COM	Blue	ON	WiFi is connected to router.
		OFF	<ul style="list-style-type: none"> <li>Improper communication on Wi-Fi Kit.</li> <li>The kit is restarting.</li> </ul>

Button	Description
Reload	Press and hold for $\geq 4$ seconds to restore the Smart Dongle to factory settings.

## 04 Commissioning

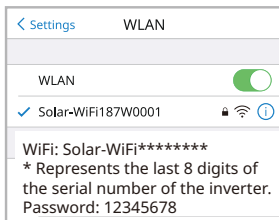
### Commissioning via SEMS Portal App

**Step 1** Download and install the SEMS Portal App.

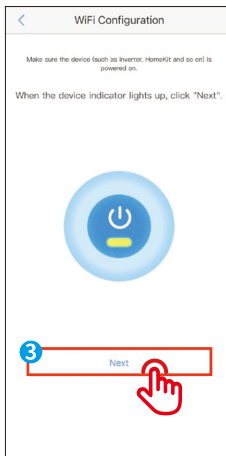
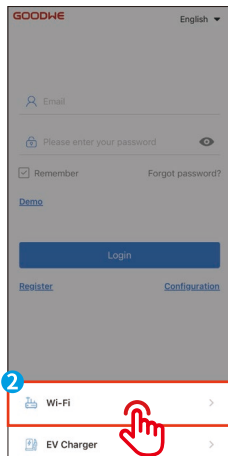
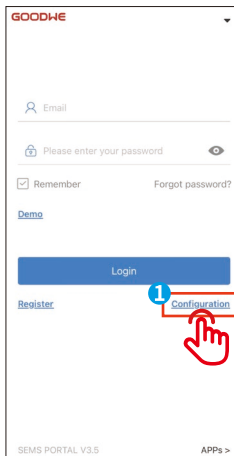


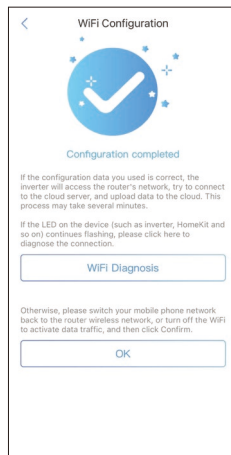
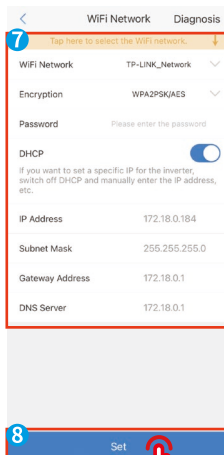
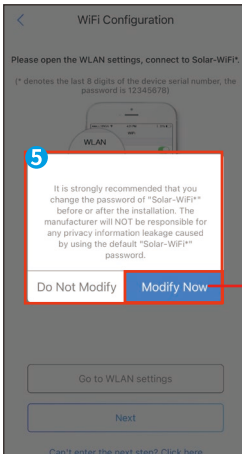
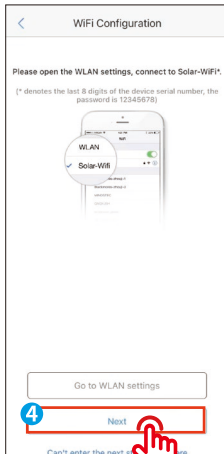
SEMS Portal App

**Step 2** Connect the app and the inverter.



**Step 3** Network Commissioning of the Kit.





**Note:** After setting the WiFi Network, the module will restart automatically and the indicator will be off temporarily. The indicator will be on after restarting.

No.	Parameters	Description
1	Internet access port	For Wi-Fi/LAN Kit only. Select <b>Wi-Fi</b> or <b>LAN</b> .
2	WiFi Network	For WiFi mode only. Set the parameters based on the router network information.
3	Encryption	
4	Password	
5	DHCP	<ul style="list-style-type: none"><li>• Enable <b>DHCP</b> when the router is in dynamic IP mode.</li><li>• Disable <b>DHCP</b> when the router is in static IP mode.</li></ul>
6	IP Address	<ul style="list-style-type: none"><li>• Do not configure the parameters when <b>DHCP</b> is enabled.</li><li>• Configure the parameters according to the router information when <b>DHCP</b> is disabled.</li></ul>
7	Subnet Mask	
8	Gateway Address	
9	DNS Server	



## Commissioning Via Web

**Note:** Configuring parameters via the web applies to the Wi-Fi Kit and Wi-Fi Box, not the Wi-Fi/LAN Kit.

1 **Log in to 10.10.100.253**  
Your password will be sent unencrypted.

2 User Name **admin**

3 Password **admin**

4 **Log In**

Wizard Advanced Management	<b>Device information</b>	
	Firmware version	V1.1.2.1
	MAC address	*****
	Wireless AP mode	<b>Enable</b>
	SSID	Solar-WiFi123W1234
	IP address	10.10.100.253
	Wireless STA mode	<b>Enable</b>
	Router SSID	TP-LINK_Network
	Encryption method	WPA2PSK
	Encryption algorithm	AES

**Cannot join the network, maybe caused by:**

router doesn't exist, or signal is too weak, or password is incorrect.

★**Help:** Wizard will help you to complete setting within 5 minute.

**Start Setup**

Please select your current wireless network:

	SSID	AUTH/ENCRY	RSSI	Channel
6 <input type="radio"/>	Solar-WiFi205G0484	*****	100	6
<input checked="" type="radio"/>	TP-LINK_Network	*****	100	6
<input type="radio"/>	Solar-WiFi219W0020	*****	100	6
<input type="radio"/>	Solar-WiFi203W0661	*****	98	1
<input type="radio"/>	Solar-WiFi181W1234	*****	98	6
<input type="radio"/>	CODING-LINK	*****	88	1
<input type="radio"/>	LINK-Setup	*****	88	1

**Refresh**

★**Note:** When RSSI of the selected WiFi network is lower than 30%, the connection may be unstable, please select other available network or shorten the distance between the device and router.

If your wireless router does not broadcast SSID, please click 'Next' and add a wireless network manually.

**Back**

**Next**

**Add wireless network manually:**

Network name (SSID)

Encryption method

Encryption algorithm

**Please enter the wireless network password:**

Password

Show psk

★**Note:** case sensitive for SSID and Password.  
Please make sure all parameters of wireless network are matched with router, including password.

Save success!

The current configuration will take effect after restart.

If you still need to configure the other pages of information, please go to complete your required configuration.

Configuration is complete, you can go to the Management page, click on the restart device "OK" button.

Confirm to complete ?

No.	Parameters	Description
1	Network name (SSID)	Set the parameters based on the router network information.
2	Encryption method	
3	Encryption algorithm	
4	Password	

**(Optional)** Continue the following steps when the router is in static IP mode.

12 Wizard  
Advanced  
Management

### Access point setting

Network name(SSID)

Encryption mode

Encryption algorithm

Password(8 to 63 characters)

★Note:config the device's parameters under the access point mode. Save

### DHCP setting for STA

IPDHCP Mode

IP address

Subnet mask

Gateway address

DNS server address

★Note:After changing the setting,the device must be restarted. 15 Save

#### Saved Successfully!

Configurations will take effect after restart.  
After restart, you will need to re-login the configuration interface for other settings, so it is recommended to restart after completing all settings.  
Please click [Restart] to restart now, or click [Back] to continue setting.  
You can restart after all configuration.

16 Restart Back

No.	Parameters	Description
1	IPDHCP Mode	Select <b>STATIC</b> .
2	IP Address	Set the parameters of the WiFi Kit based on the router network information.
3	Subnet Mask	
4	Gateway Address	
5	DNS Server	

## 05 Password Setting

Log in using the initial password for the first time and change the password as soon as possible. To ensure account security, you are advised to change the password periodically and keep the new password in mind.

### Change the password of the Wi-Fi/LAN Kit.

The image shows a sequence of four screenshots illustrating the process of logging in and changing the password of the Wi-Fi/LAN Kit.

- 1** Login to 10.10.100.253  
Your password will be sent unencrypted.
- 2** User Name **admin**
- 3** Password **admin**
- 4** Log In

**5** Mode Settings  
**AP Settings**  
 STA Settings  
 Device Management

**Wireless Network**

Network Mode: 11b/g/n mixed mode

Network Name(SSID): Solar-WiFi203W0013

BSSID: 34-EA-E7-D4-6A-88

Frequency (Channel): Auto

Submit Reset

**Solar-WiFi203W0013**

Security Mode: WPA2-PSK

**WPA**

WPA Algorithms:  TKIP  AES

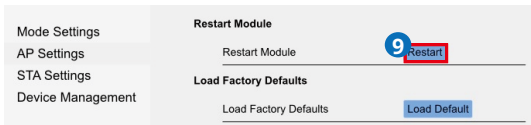
TKIPAES

Key: [Redacted]

Submit Reset

**Set successfully, restart to use new setting.**

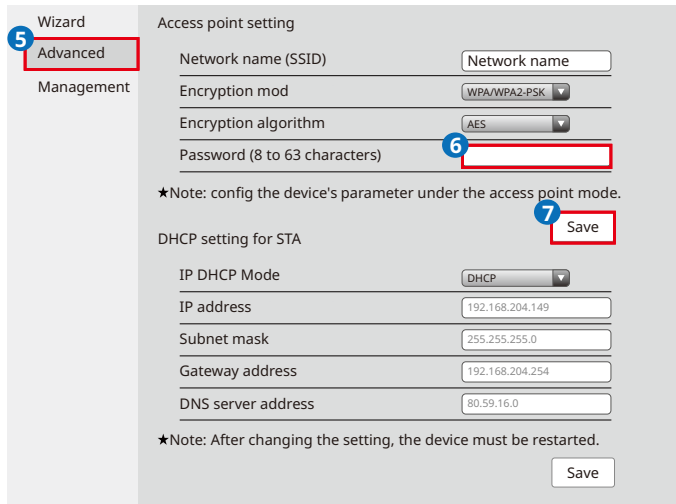
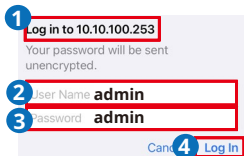
Restart button in **Device Management**



**Note:** The indicator will be off temporarily when the Wi-Fi/LAN Kit is restarting and be on again after restarting.

Reconnect WiFi after resetting the Wi-Fi/LAN Kit.

## Change the password of the Wi-Fi Kit/Wi-Fi Box



Wizard

Advanced

Management

**Saved Successfully!**

Configurations will take effect after restart.  
After restart, you will need to re-login the configuration interface for other settings, so it is recommended to restart after completing all settings.  
Please click [Restart] to restart now, or click [Back] to continue setting.  
You can restart after all configuration.

8

**Restart****Back****Restart/Reload Default success!**

## 06 Device Replacement

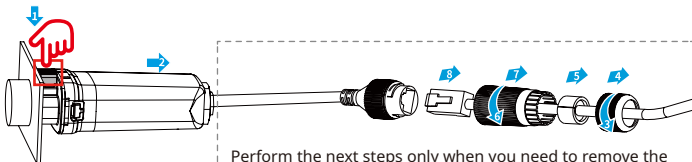
**Step 1** Prepare the new device before replacing the device.

**Step 2** Remove the device.

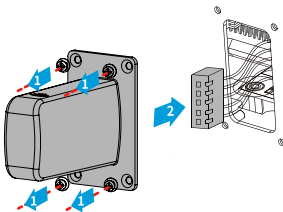
**Step 3** Install the new device.

**Step 4** Refer to the device Quick Installation Guide to configure the device.

For Wi-Fi/LAN Kit and Wi-Fi Kit.



For Wi-Fi Box.



## 07 Troubleshooting

No.	Problem	Solutions
1	Cannot find Solar-WiFi**	<ol style="list-style-type: none"> <li>1. Make sure that the inverter is powered on and the WiFi module is connected properly.</li> <li>2. Make sure that the smart device is within the communication range of the WiFi module.</li> <li>3. Restart the inverter.</li> </ol>
2	Unable to connect to Solar-WiFi**	<ol style="list-style-type: none"> <li>1. Enter the password: 12345678.</li> <li>2. Make sure that no other smart device is connected to Solar-WiFi**.</li> <li>3. Restart the inverter and reconnect Solar-WiFi**.</li> <li>4. Make sure the password is correct.</li> </ol>
3	Cannot log in to 10.10.100.253	<ol style="list-style-type: none"> <li>1. Switch browsers like Google Chrome, Firefox, IE, Safari.</li> <li>2. Restart the inverter and reconnect the WiFi.</li> </ol>
4	Cannot find router SSID	<ol style="list-style-type: none"> <li>1. Put the router nearer to the inverter. Or add some WiFi relay devices.</li> <li>2. Check if the channel number of router is higher than 13. If yes, modify it into a lower number at router configuration page.</li> </ol>
5	WiFi LED indicator blinks twice continuously with all configuration steps done	<ol style="list-style-type: none"> <li>1. Restart the inverter.</li> <li>2. Check if the SSID, encryption method, encryption algorithm and password on WiFi configuration page is the same with that of Wireless Router, if it is different, please modify it.</li> <li>3. Restart Wireless Router.</li> <li>4. Move Wireless Router closer to the inverter or use a wireless repeater to enhance WiFi signal.</li> </ol>
6	WiFi LED indicator blinks four times continuously when all configuration steps done	<ol style="list-style-type: none"> <li>1. Connect smart device to network and access to SEMS Portal App to check if the inverter is online.</li> <li>2. Restart Wireless Router and the inverter.</li> </ol>



## 08 Technical Data

EN

Model	Wi-Fi/LAN Kit	Wi-Fi Box	Wi-Fi Kit
<b>General Data</b>			
Max. Inverters Supported	1	1	1
Connection Interface	USB	5 Pin	USB
Ethernet Interface	10M/100M Ethernet	/	
Installation	Plug and Play	Screw Fixation	Plug and Play
Indicator	LED Indicator	/	LED Indicator
Dimensions (W×H×D mm)	48*119*32	65*72*40	49*96*32
Weight (g)	106	42	59
Ingress Protection Rating	IP65	IP65	IP65
Power Consumption (W)	5	2	2
Operating Temperature Range (°C)	-30~60°C	-30~60°C	-30~60°C
Storage Temperature Range (°C)	-40~70°C	-40~70°C	-40~70°C
Relative Humidity	0-100% (non-condensing)		
Max. Operating Altitude (m)	4000	4000	4000
<b>Wireless Parameter</b>			
Supported Standards & Frequencies	802.11b/g/n(2.412G-2.472G)	802.11b/g/n(2.412G-2.472G)	802.11b/g/n(2.412G-2.472G)
Operating Mode	AP/STA/AP+STA	AP/STA/AP+STA	AP/STA/AP+STA

## 09 EU Declaration of Conformity

EN

GoodWe Technologies Co., Ltd. hereby declares that the communication device sold in the European market meets the requirements of the following directives:

- Radio Equipment Directive 2014/53/EU (RED)
- Restrictions of Hazardous Substances Directive 2011/65/EU and (EU) 2015/863 (RoHS)
- Waste Electrical and Electronic Equipment 2012/19/EU
- Registration, Evaluation, Authorization and Restriction of Chemicals (EC) No 1907/2006 (REACH)

You can download the EU Declaration of Conformity on <https://en.goodwe.com>.

## 08 Технически данни

**BG**

Модел	Wi-Fi/LAN Kit	Wi-Fi Box	Wi-Fi Kit
<b>Обща информация</b>			
Макс. поддържани инвертори	1	1	1
Интерфейс за свързване	USB	5-цифтов	USB
Ethernet интерфейс	10M/100M Ethernet	/	
Инсталиране	Включи и пусни (Plug and Play)	Фиксирани с винт	Включи и пусни (Plug and Play)
Индикатор	LED индикатор	/	LED индикатор
Размери (Ш×В×Д mm)	48*119*32	65*72*40	49*96*32
Тегло (g)	106	42	59
Степен на защита от проникване	IP65	IP65	IP65
Консумирана мощност (W)	5	2	2
Температурен диапазон на работа (°C)	-30~60°C	-30~60°C	-30~60°C
Температурен диапазон на съхранение (°C)	-40~70°C	-40~70°C	-40~70°C
Относителна влажност	0-100% (без конденз)		
Макс. работна височина (m)	4000	4000	4000
<b>Безжичен параметър</b>			
Поддържани стандарти и честоти	802.11b/g/n(2.412G-2.472G)	802.11b/g/n(2.412G-2.472G)	802.11b/g/n(2.412G-2.472G)
Режим на работа	AP/STA/AP+STA	AP/STA/AP+STA	AP/STA/AP+STA

## 09 Декларация за съответствие на ЕС

**BG**

С настоящото GoodWe Technologies Co., Ltd. декларира, че комуникационното устройство, продавано на европейския пазар, отговаря на изискванията на следните директиви:

- Директива относно радиосъоръженията 2014/53/EC (RED)
- Директива относно употребата на опасни вещества 2011/65/EC и (EC) 2015/863 (RoHS)
- Директива относно отпадъци от електрическо и електронно оборудване 2012/19/EC
- Регламент (ЕО) № 1907/2006 относно регистрацията, оценката, разрешаването и ограничаването на химикали (REACH)

За по-подробни декларации за съответствие посетете адрес <https://en.goodwe.com>.

## 08 Technické údaje

CS

Model	Wi-Fi/LAN Kit	Wi-Fi Box	Wi-Fi Kit
<b>Obecná data</b>			
Max. podporované měniče	1	1	1
Rozhraní připojení	USB	5 pin	USB
Ethernetové rozhraní	10M/100M Ethernet	/	
Instalace	Plug and Play	Fixace šroubu	Plug and Play
Kontrolka	Indikátor LED	/	Indikátor LED
Rozměry (Š × V × H mm)	48*119*32	65*72*40	49*96*32
Hmotnost (g)	106	42	59
Stupeň ochrany krytem	IP65	IP65	IP65
Příkon (W)	5	2	2
Rozsah provozních teplot (°C)	-30~60 °C	-30~60 °C	-30~60 °C
Rozsah skladovacích teplot (°C)	-40~70 °C	-40~70 °C	-40~70 °C
Relativní vlhkost	0-100 % (nekondenzující)	0-100 % (nekondenzující)	0-100 % (nekondenzující)
Max. provozní nadmořská výška (m)	4000	4000	4000
<b>Bezdrátový parametr</b>			
Podporované standardy a frekvence	802,11 b/g/n (2.412G-2.472G)	802,11 b/g/n (2.412G-2.472G)	802,11 b/g/n (2.412G-2.472G)
Provozní režim	AP/STA/AP+STA	AP/STA/AP+STA	AP/STA/AP+STA

## 09 EU prohlášení o shodě

CS

Společnost GoodWe Technologies Co., Ltd. tímto prohlašuje, že komunikační zařízení, prodávané na evropském trhu, splňuje požadavky následujících směrnic:

- Směrnice o rádiových zařízeních 2014/53/EU (RED)
- Směrnice o omezeních nebezpečných látek 2011/65/EU a (EU) 2015/863 (RoHS)
- Odpadní elektrická a elektronická zařízení 2012/19/EU
- Registrace, hodnocení, povolování a omezování chemických látek (ES) č. 1907/2006 (REACH)

Pro podrobnější prohlášení o shodě navštivte <https://en.goodwe.com>.

## 08 Tekniske data

DA

Model	Wi-Fi/LAN Kit	Wi-Fi Box	Wi-Fi Kit
<b>Generelle data</b>			
Max. understøttede invertere	1	1	1
Grænseflade for tilslutning	USB	5 Pin	USB
Ethernet-interface	10M/100M Ethernet	/	
Installation	Sæt ind og afspil	Fastgørelse med skruer	Sæt ind og afspil
Indikator	LED-indikator	/	LED-indikator
Mål (B×H×D mm)	48*119*32	65*72*40	49*96*32
Vægt (g)	106	42	59
Klassificering for indtrængningsbeskyttelse	IP65	IP65	IP65
Strømforbrug (W)	5	2	2
Driftstemperaturområde (°C)	-30~60°C	-30~60°C	-30~60°C
Opbevaringstemperaturområde (°C)	-40~70°C	-40~70°C	-40~70°C
Relativ luftfugtighed	0-100% (ikke-kondenserende)		
Maks. driftshøjde (m)	4000	4000	4000
<b>Trådløs parameter</b>			
Understøttede standarder og frekvenser	802.11b/g/n(2.412G-2.472G)		
Driftstilstand	AP/STA/AP+STA	AP/STA/AP+STA	AP/STA/AP+STA

## 09 EU-overensstemmelseserklæring

DA

GoodWe Technologies Co., Ltd. erklærer hermed, at kommunikationsenheden, som sælges på det europæiske marked, opfylder kravene i følgende direktiver:

- Direktiv om radioudstyr 2014/53/EU (RED)
- Direktiv om begrænsning af anvendelsen af visse farlige stoffer 2011/65/EU og (EU) 2015/863 (RoHS)
- Affald af elektrisk og elektronisk udstyr 2012/19/EU
- Registration, Evaluation, Authorization and Restriction of Chemicals (EF) nr. 1907/2006 (REACH)

Mere detaljerede oplysninger vedr. overensstemmelseserklæringer fås på <https://en.goodwe.com>.

## 08 Technische Daten

DE

Modell	Wi-Fi/LAN Kit	Wi-Fi Box	Wi-Fi Kit
<b>Allgemeine Daten</b>			
Max. unterstützte Wechselrichter	1	1	1
Verbindungsschnittstelle	USB	5-polig	USB
Ethernet-Schnittstelle	10M/100M Ethernet	/	
Installation	Plug and Play	Schraubenfixierung	Plug and Play
Anzeige	LED-Anzeige	/	LED-Anzeige
Abmessungen (B×H×T mm)	48*119*32	65*72*40	49*96*32
Gewicht (g)	106	42	59
Schutzart gegen Eindringen	IP65	IP65	IP65
Leistungsaufnahme (W)	5	2	2
Betriebstemperaturbereich (°C)	-30 - 60°C	-30 - 60°C	-30 - 60°C
Lagertemperaturbereich (°C)	-40 - 70°C	-40 - 70°C	-40 - 70°C
Relative Feuchte	0 - 100 % (nicht kondensierend)		
Max. Betriebshöhe (m)	4000	4000	4000
<b>WLAN-Parameter</b>			
Unterstützte Normen und Frequenzen	802.11b/g/n(2.412G-2.472G)	802.11b/g/n(2.412G-2.472G)	802.11b/g/n(2.412G-2.472G)
Betriebsmodus	AP/STA/AP+STA	AP/STA/AP+STA	AP/STA/AP+STA

## 09 EU-Konformitätserklärung

DE

GoodWe Technologies Co., Ltd. erklärt hiermit, dass das auf dem europäischen Markt verkaufte Kommunikationsgerät die Anforderungen der folgenden Richtlinien erfüllt:

- Richtlinie 2014/53/EU (Funkanlagenrichtlinie)
- Richtlinie 2011/65/EU (Beschränkung der Verwendung bestimmter gefährlicher Stoffe in Elektro- und Elektronikgeräten) sowie Richtlinie 2015/863 (RoHS)
- Richtlinie 2012/19/EU (Entsorgung von Elektro- und Elektronik-Altgeräten)
- Richtlinie 1907/2006 (Registrierung, Bewertung, Zulassung und Beschränkung von Chemikalien, kurz: REACH)

Für weitere Infos zur Konformitätserklärung siehe <https://en.goodwe.com>.

## 08 Τεχνικά στοιχεία

EL

Μοντέλο	Wi-Fi/LAN Kit	Wi-Fi Box	Wi-Fi Kit
<b>Γενικά δεδομένα</b>			
Μέγιστος αριθμός υποστηριζόμενων Inverter	1	1	1
Διεπαφή σύνδεσης	USB	5 ακίδων	USB
Διεπαφή Ethernet	10M/100M Ethernet	/	
Εγκατάσταση	Τοποθέτηση και άμεση λειτουργία	Στερέωση με βίδες	Τοποθέτηση και άμεση λειτουργία
Ένδειξη	Ένδειξη LED	/	Ένδειξη LED
Διαστάσεις (Π×Υ×Β mm)	48*119*32	65*72*40	49*96*32
Βάρος (g)	106	42	59
Δείκτης προστασίας από εισχώρηση	IP65	IP65	IP65
Κατανάλωση ισχύος (W)	5	2	2
Εύρος θερμοκρασίας λειτουργίας (°C)	-30~60°C	-30~60°C	-30~60°C
Εύρος θερμοκρασίας φύλαξης (°C)	-40~70°C	-40~70°C	-40~70°C
Σχετική υγρασία	0-100% (χωρίς συμπύκνωση)		
Μέγιστο υψόμετρο λειτουργίας (m)	4.000	4.000	4.000
<b>Παράμετρος ασύρματης επικοινωνίας</b>			
Υποστηριζόμενα πρότυπα και συχνότητες	802.11b/g/n(2,412G-2,472G)		
Τρόπος λειτουργίας	AP/STA/AP+STA	AP/STA/AP+STA	AP/STA/AP+STA

## 09 Δήλωση συμμόρφωσης E.E.

EL

Η GoodWe Technologies Co., Ltd. δηλώνει διά του παρόντος ότι η συσκευή επικοινωνίας που πωλείται στην ευρωπαϊκή αγορά πληροί τις απαιτήσεις των ακόλουθων οδηγιών:

- Οδηγία ραδιοεξοπλισμών 2014/53/EE (RED)
- Οδηγία περιορισμών χρήσης επικίνδυνων ουσιών 2011/65/EE και (EE) 2015/863 (RoHS)
- Απόβλητα ηλεκτρικού και ηλεκτρονικού εξοπλισμού 2012/19/EE
- Καταχώρηση, αξιολόγηση, αδειοδότηση και περιορισμός των χημικών ουσιών (EK) αρ. 1907/2006 (REACH)

Για αναλυτικότερες δηλώσεις συμμόρφωσης, επισκεφθείτε την ιστοσελίδα <https://en.goodwe.com>.

## 08 Datos técnicos

ES

Modelo	Wi-Fi/LAN Kit	Wi-Fi Box	Wi-Fi Kit
<b>Datos generales</b>			
Inversores máx. compatibles	1	1	1
Interfaz de conexión	USB	5 clavijas	USB
Interfaz de Ethernet	Ethernet 10M/100M	/	
Instalación	Plug and Play	Fijación de tornillos	Plug and Play
Indicador	Indicador LED	/	Indicador LED
Dimensiones (An×Al×P mm)	48*119*32	65*72*40	49*96*32
Peso (g)	106	42	59
Grado de protección IP	IP65	IP65	IP65
Consumo de potencia (W)	5	2	2
Rango de temperaturas de funcionamiento (°C)	-30~60°C	-30~60°C	-30~60°C
Rango de temperaturas de almacenamiento (°C)	-40~70°C	-40~70°C	-40~70°C
Humedad relativa	0-100 % (sin condensación)		
Altitud de funcionamiento máx. (m)	4000	4000	4000
<b>Parámetro inalámbrico</b>			
Estándares y frecuencias compatibles	802.11b/g/n(2.412G-2.472G)		
Modo de funcionamiento	AP/STA/AP+STA	AP/STA/AP+STA	AP/STA/AP+STA

## 09 Declaración de conformidad de la UE

ES

GoodWe Technologies Co., Ltd. declara por la presente que el dispositivo de comunicación comercializado en el mercado europeo cumple los requisitos de las siguientes Directivas:

- Directiva sobre equipos radioeléctricos 2014/53/UE (DER)
- Directiva sobre restricciones de sustancias peligrosas 2011/65/UE y (UE) 2015/863 (RoHS)
- Residuos de aparatos eléctricos y electrónicos 2012/19/UE
- Registro, evaluación, autorización y restricción de sustancias químicas (CE) n.º 1907/2006 (REACH)

Para obtener declaraciones de conformidad más detalladas, acceda a <https://en.goodwe.com>.

## 08 Tehnilised andmed

**ET**

Mudel	Wi-Fi/LAN Kit	Wi-Fi Box	Wi-Fi Kit
<b>Üldandmed</b>			
Maks. lubatud inverterite arv	1	1	1
Ühendusliides	USB	5 tihvtiga	USB
Etherneti liides	10M/100M Ethernet	/	
Paigaldamine	Pistik ja kaabel	Kruvi kinnitamine	Pistik ja kaabel
Indikaator	LED-indikaator	/	LED-indikaator
Mõõtmed (L×K×P mm)	48*119*32	65*72*40	49*96*32
Kaal (g)	106	42	59
IP-kaitseklass	IP65	IP65	IP65
Võimsustarve (W)	5	2	2
Töötemperatuuri vahemik (°C)	-30 kuni +60°C	-30 kuni +60°C	-30 kuni +60°C
Hoiustamistemperatuuri vahemik (°C)	-40 kuni +70°C	-40 kuni +70°C	-40 kuni +70°C
Suhteline niiskus	0–100% (mittekondenseeruv)		
Kasutuskoha max kõrgus merepinnast (m)	4000	4000	4000
<b>Juhtmeta parameeter</b>			
Toetatud standardid ja sagedused	802.11b/g/n(2.412G-2.472G)	802.11b/g/n(2.412G-2.472G)	802.11b/g/n(2.412G-2.472G)
Töörežiim	AP/STA/AP+STA	AP/STA/AP+STA	AP/STA/AP+STA

## 09 ELi vastavusdeklaratsioon

**ET**

GoodWe Technologies Co., Ltd. deklareerib käesolevaga, et sideseade, mida müüakse Euroopa turul, vastab järgmiste direktiivide nõuetele:

- Raadioseadmete direktiiv 2014/53/EL (RED)
- Ohtlike ainete kasutamise piiramist käsitlev direktiiv 2011/65/EL ja (EL) 2015/863 (RoHS)
- Elektri- ja elektroonikaseadmete jäätmete direktiiv 2012/19/EL
- Kemikaalide registreerimise, hindamise, autoriseerimise ja piiramise direktiiv (EÜ) nr 1907/2006 (REACH)

Üksikasjalikumad vastavusdeklaratsioonid leiata aadressilt <https://en.goodwe.com>.



## 08 Tekniset tiedot

FI

Malli	Wi-Fi/LAN Kit	Wi-Fi Box	Wi-Fi Kit
<b>Yleisiä tietoja</b>			
Tuettujen taajuusmuuttajien enimmäismäärä	1	1	1
Yhteysrajapinta	USB	5-nastainen	USB
Ethernet-käyttöliittymä	10M/100M Ethernet	/	
Asennus	Liitä ja käytä	Ruuvikiinnitys	Liitä ja käytä
Merkkivalo	LED-merkkivalo	/	LED-merkkivalo
Mitat (L x K x S mm)	48*119*32	65*72*40	49*96*32
Paino (g)	106	42	59
Kotelointiluokka	IP65	IP65	IP65
Tehonkulutus (W)	5	2	2
Käyttölämpötila (°C)	-30-60 °C	-30-60 °C	-30-60 °C
Varastointilämpötila (°C)	-40-70 °C	-40-70 °C	-40-70 °C
Suhteellinen kosteus	0-100 % (ei-kondensoiva)		
Enimmäiskäyttökorkeus (m)	4000	4000	4000
<b>Langaton parametri</b>			
Tuetut standardit ja taajuudet	802.11 b/g/n (2,412 G-2,472 G)		
Käyttötila	AP/STA/AP+STA	AP/STA/AP+STA	AP/STA/AP+STA

## 09 EU-vaatimustenmukaisuusvakuutus

FI

GoodWe Technologies Co., Ltd. vakuuttaa täten, että Euroopan markkinoilla myytävä tiedonsiirtolaite täyttää seuraavien direktiivien vaatimukset:

- Radiolaitedirektiivi 2014/53/EU (RED)
- Vaarallisten aineiden rajoituksia koskeva direktiivi 2011/65/EU ja (EU) 2015/863 (RoHS)
- Sähkö- ja elektroniikkalaiteromu 2012/19/EU
- Kemikaalien rekisteröinti, arviointi, luvat ja rajoittaminen (EY) Nro 1907/2006 (REACH)

Katso tarkemmat vaatimustenmukaisuusvakuutukset osoitteesta <https://en.goodwe.com>.

## 08 Données techniques

FR

Modèle	Wi-Fi/LAN Kit	Wi-Fi Box	Wi-Fi Kit
<b>Données générales</b>			
Nombre max. d'onduleurs pris en charge	1	1	1
Interface de connexion	USB	5 broches	USB
Interface Ethernet	Ethernet 10M/100M	/	
Installation	Plug-and-Play	Fixation par vis	Plug-and-Play
Témoin	Témoin LED	/	Témoin LED
Dimensions (l x H x P mm)	48 x 119 x 32	65 x 72 x 40	49 x 96 x 32
Poids (g)	106	42	59
Indice de protection	IP65	IP65	IP65
Consommation électrique (W)	5	2	2
Plage de température de fonctionnement (°C)	-30 à 60°C	-30 à 60°C	-30 à 60°C
Plage de température de stockage (°C)	-40 à 70°C	-40 à 70°C	-40 à 70°C
Humidité relative	0 à 100 % (sans condensation)		
Altitude d'exploitation maximale (m)	4 000	4 000	4 000
<b>Paramètre sans fil</b>			
Normes et fréquences prises en charge	802.11b/g/n (2,412 GHz - 2,472 GHz)		
Mode de fonctionnement	AP/STA/AP+STA		

## 09 Déclaration de conformité UE

FR

GoodWe Technologies Co., Ltd. déclare par la présente que l'appareil de communication vendu sur le marché européen répond aux exigences des directives suivantes :

- Directive 2014/53/UE relative aux équipements radioélectriques (Directive RED)
- Directive 2011/65/UE et directive (UE) 2015/863 concernant la limitation de l'utilisation de certaines substances dangereuses (RoHS)
- Directive 2012/19/UE relative aux déchets d'équipements électriques et électroniques
- Règlement (CE) N° 1907/2006 relatif à l'enregistrement, l'évaluation et l'autorisation des substances chimiques (REACH)

Pour plus d'informations sur les déclarations de conformité, consultez le site <https://en.goodwe.com>.

## 08 Tehnički podaci

Model	Wi-Fi/LAN Kit	Wi-Fi Box	Wi-Fi Kit
<b>Opći podaci</b>			
Maks. podržani inverteri	1	1	1
Sučelje za povezivanje	USB	5 pinova	USB
Ethernet sučelje	10M/100M ETHERNET	/	
Instalacija	Uključi i radi	Učvršćivanje vijcima	Uključi i radi
Indikator	LED indikator	/	LED indikator
Dimenzije (Š×V×D mm)	48*119*32	65*72*40	49*96*32
Težina (g)	106	42	59
Stupanj zaštite od prodora	IP65	IP65	IP65
Potrošnja energije (W)	5	2	2
Raspon radne temperature (°C)	-30~60°C	-30~60°C	-30~60°C
Raspon temperature za skladištenje (°C)	-40~70°C	-40~70°C	-40~70°C
Relativna vlažnost	0-100% (bez kondenzacije)	0-100% (bez kondenzacije)	0-100% (bez kondenzacije)
Maks. radna visina (m)	4000	4000	4000
<b>Bežični parametar</b>			
Podržani standardi i frekvencije	802,11b/g/n(2,412G-2,472G)		
Radni režim	AP/STA/AP+STA	AP/STA/AP+STA	AP/STA/AP+STA

## 09 EU izjava o sukladnosti

Ovime tvrtka GoodWe Technologies Co., Ltd. izjavljuje da komunikacijski uređaj, koji se prodaje na europskom tržištu, ispunjava zahtjeve sljedećih direktiva:

- Direktiva 2014/53/EU o radijskoj opremi (RED)
- Direktiva 2011/65/EU o ograničenju uporabe određenih opasnih tvari i (EU) 2015/863 (RoHS)
- Direktiva 2012/19/EU o otpadnoj električnoj i elektroničkoj opremi
- Uredba (EZ) br. 1907/2006 o registraciji, evaluaciji, autorizaciji i ograničavanju kemikalija (REACH)

Detaljnije izjave o sukladnosti možete pronaći na poveznici <https://en.goodwe.com>.

## 08 Műszaki adatok

**HU**

Modell	Wi-Fi/LAN Kit	Wi-Fi Box	Wi-Fi Kit
<b>Általános adatok</b>			
Max. Támogatott inverterek száma	1	1	1
Csatlakozási felület	USB	5 Pin	USB
Ethernet-interfész	10M/100M Ethernet	/	
Telepítés	Plug and Play (azonnal használható)	Csavaros rögzítés	Plug and Play (azonnal használható)
Indikátor	LED indikátor	/	LED indikátor
Méreték (SZ×MA×MÉ mm)	48*119*32	65*72*40	49*96*32
Súly (g)	106	42	59
Behatolásvédelmi besorolás	IP65	IP65	IP65
Áramfogyasztás (W)	5	2	2
Üzemhőmérséklet-tartomány (°C)	-30~60°C	-30~60°C	-30~60°C
Tárolásihőmérséklet-tartomány (°C)	-40~70°C	-40~70°C	-40~70°C
Relatív páratartalom	0-100% (nem lecsapódó)		
Max. üzemi magasság (m)	4000	4000	4000
<b>Vezeték nélküli paraméter</b>			
Támogatott szabványok és frekvenciák	802,11b/g/n(2,412G-2,472G)		
Üzem mód	AP/STA/AP+STA	AP/STA/AP+STA	AP/STA/AP+STA

## 09 EU megfeleléségi nyilatkozat

**HU**

A GoodWe Technologies Co., Ltd. ezennel kijelenti, hogy az európai piacon értékesített kommunikációs eszköz megfelel az alábbi irányelvek követelményeinek:

- A rádióberendezések forgalmazására vonatkozó 2014/53/EU irányelv (RED)
- Elektromos és elektronikus berendezések veszélyes anyagainak korlátozásáról szóló 2011/65/EU és 2015/863/EU irányelv (RoHS)
- Az elektromos és elektronikus berendezések hulladékairól szóló 2012/19/EU irányelv
- A vegyi anyagok regisztrálásáról, értékeléséről, engedélyezéséről és korlátozásáról szóló 1907/2006/EK irányelv (REACH)

A részletesebb megfeleléségi nyilatkozatért látogasson el a <https://en.goodwe.com> weboldalra.

## 08 Dati tecnici

IT

Modello	Wi-Fi/LAN Kit	Wi-Fi Box	Wi-Fi Kit
<b>Dati generali</b>			
N. max. inverter supportati	1	1	1
Interfaccia collegamento	USB	5 pin	USB
Interfaccia Ethernet	10M/100M Ethernet	/	
Installazione	Plug and Play	Fissaggio con viti	Plug and Play
Indicatore	Indicatore LED	/	Indicatore LED
Dimensioni (LxA×P mm)	48*119*32	65*72*40	49*96*32
Peso (g)	106	42	59
Grado di protezione dall'ingresso	IP65	IP65	IP65
Consumo di energia (W)	5	2	2
Intervallo di temperatura operativa (°C)	-30~60 °C	-30~60 °C	-30~60 °C
Intervallo di temperatura di conservazione (°C)	-40~70 °C	-40~70 °C	-40~70 °C
Umidità relativa	0-100% (senza condensa)		
Altitudine operativa max. (m)	4000	4000	4000
<b>Parametro wireless</b>			
Frequenze e standard supportati	802,11 b/g/n(2,412G-2,472G)		
Modo operativo	AP/STA/AP+STA	AP/STA/AP+STA	AP/STA/AP+STA

## 09 Dichiarazione di conformità UE

IT

GoodWe Technologies Co., Ltd. dichiara che il dispositivo di comunicazione venduto nel mercato europeo soddisfa i requisiti delle seguenti direttive:

- Direttiva apparecchiature radio 2014/53/UE (RED)
- Direttiva 2011/65/UE sulla restrizione delle sostanze pericolose e (UE) 2015/863 (RoHS)
- Rifiuti di apparecchiature elettriche ed elettroniche 2012/19/UE
- Registrazione, valutazione, autorizzazione e restrizione delle sostanze chimiche (CE) n. 1907/2006 (REACH)

Per dichiarazioni di conformità più dettagliate visitare <https://en.goodwe.com>.

## 08 Techniniai duomenys

**LT**

Modelis	Wi-Fi/LAN Kit	Wi-Fi Box	Wi-Fi Kit
<b>Bendrieji duomenys</b>			
Palaikomi maks. inverteriai	1	1	1
Ryšio sąjaja	USB	5 kontaktų	USB
Eterneto sąjaja	10M/100M eternetas	/	
Instaliavimas	Savaiminio paleidimo	Sraigto fiksavimas	Savaiminio paleidimo
Indikatorius	Šviesadiodis indikatorius	/	Šviesadiodis indikatorius
Matmenys (p × a × g mm)	48*119*32	65*72*40	49*96*32
Svoris (g)	106	42	59
Apsaugos klasė	IP65	IP65	IP65
Energijos sąnaudos (W)	5	2	2
Darbinės temperatūros intervalas (°C)	-30~60 °C	-30~60 °C	-30~60 °C
Saugojimo temperatūros intervalas (°C)	-40~70 °C	-40~70 °C	-40~70 °C
Santykinė drėgmė	0~100 % (be kondensato)		
Didž. darbinis aukštis (m)	4000	4000	4000
<b>Belaidžio ryšio parametras</b>			
Palaikomi standartai ir dažniai	802,11b/g/n(2,412G-2,472G)		
Veikimo režimas	AP/STA/AP+STA		

## 09 ES atitikties deklaracija

**LT**

Šiuo dokumentu „GoodWe Technologies Co., Ltd.“ pareiškia, kad Europos rinkoje parduodamas ryšio įrenginys atitinka šių direktyvų reikalavimus:

- Radijo įrangos direktyvą 2014/53/EU (RED),
- Pavojingų medžiagų naudojimo apribojimo direktyvą 2011/65/EU ir (EU) 2015/863 (RoHS),
- Elektros ir elektroninės įrangos atliekų direktyvą 2012/19/EU,
- Nuostatos dėl cheminių medžiagų registracijos, įvertinimo, autorizacijos ir apribojimų (EK) Nr. 1907/2006 (REACH).

Daugiau informacijos apie atitiktį rasite apsilankę adresu <https://en.goodwe.com>.

## 08 Tehniskie dati

LV

Modelis	Wi-Fi/LAN Kit	Wi-Fi Box	Wi-Fi Kit
<b>Vispārīga informācija</b>			
Maks. atbalstīti invertori	1	1	1
Savienojuma interfeiss	USB	5 tapas	USB
Ethernet saskarne	10M/100M Ethernet	/	
Uzstādīšana	Pievenot and atskaņot	Skrūves fiksācija	Pievenot and atskaņot
Indikators	LED indikators	/	LED indikators
Izmēri (PxAxDz mm)	48*119*32	65*72*40	49*96*32
Svars (g)	106	42	59
Iekļūšanas aizsardzības vērtējums	IP65	IP65	IP65
Elektroenerģijas patēriņš (W)	5	2	2
Ekspluatācijas temperatūras diapazons (°C)	-30~60°C	-30~60°C	-30~60°C
Uzglabāšanas temperatūras diapazons (°C)	-40~70°C	-40~70°C	-40~70°C
Relatīvais mitrums	0-100% (bez kondensācijas)		
Maks. ekspluatācijas augstums (m)	4000	4000	4000
<b>Bezvadu parametri</b>			
Atbalstītie standarti un frekvence	802,11b/g/n(2,412G-2,472G)		
Ekspluatācijas režīms	AP/STA/AP+STA		

## 09 EU-Konformitātsertifikācija

LV

GoodWe Technologies Co., Ltd. Ar šo deklarē, ka sakaru ierīce, kas tiek pārdota Eiropas tirgū, atbilst šādu direktīvu prasībām:

- Radio iekārtu direktīva 2014/53/ES (RED)
- Bīstamu vielu ierobežošanas direktīva 2011/65/ES un (ES) 2015/863 (RoHS)
- Direktīva 2012/19/ES par elektrisko un elektronisko iekārtu atkritumiem
- Ķīmiskājiu reģistrācija, novērtēšana, licencēšana un ierobežošana (EK) Nr. 1907/2006 (REACH)

Detalizētākas atbilstības deklarācijas skatiet vietnē <https://en.goodwe.com>.

## 08 Technische gegevens

**NL**

Model	Wi-Fi/LAN Kit	Wi-Fi Box	Wi-Fi Kit
<b>Algemene gegevens</b>			
Max. ondersteunde omvormers	1	1	1
Verbindingsinterface	USB	5-pin	USB
Ethernetinterface	10M/100M Ethernet	/	
Installatie	Plug & play	Schroefbevestiging	Plug & play
Indicator	Led-indicator	/	Led-indicator
Afmetingen (B×H×D mm)	48*119*32	65*72*40	49*96*32
Gewicht (g)	106	42	59
Beschermingsklasse tegen insijpelen	IP65	IP65	IP65
Stroomverbruik (W)	5	2	2
Bedrijfstemperatuurbereik (°C)	-30~60°C	-30~60°C	-30~60°C
Opslagtemperatuurbereik (°C)	-40~70°C	-40~70°C	-40~70°C
Relatieve vochtigheid	0-100% (niet condenserend)		
Max. gebruikshoogte (m)	4000	4000	4000
<b>Draadloze parameter</b>			
Ondersteunde standaarden & frequenties	802.11b/g/n(2.412G-2.472G)		
Bedrijfsmodus	AP/STA/AP+STA		

## 09 EU-verklaring van overeenstemming

**NL**

GoodWe Technologies Co., Ltd. verklaart hierbij dat het communicatie-apparaat zoals dat op de Europese markt wordt verkocht, voldoet aan de vereisten van de volgende richtlijnen:

- Richtlijn radioapparatuur 2014/53/EU (RED-richtlijn)
- Richtlijn inzake beperking van het gebruik van bepaalde gevaarlijke stoffen 2011/65/EU en (EU) 2015/863 (RoHS-richtlijn)
- Richtlijn betreffende afgedankte elektrische en elektronische apparatuur 2012/19/EU (WEEE-richtlijn)
- Verordening inzake de registratie en beoordeling van en de autorisatie en beperkingen ten aanzien van chemische stoffen (EG) nr. 1907/2006 (REACH)

Ga voor meer gedetailleerde conformiteitsverklaringen naar <https://en.goodwe.com>.



## 08 Dane techniczne

Model	Wi-Fi/LAN Kit	Wi-Fi Box	Wi-Fi Kit
<b>Dane ogólne</b>			
Maks. liczba obsługiwanych falowników	1	1	1
Interfejs połączenia	USB	5-wtykowy	USB
Interfejs sieci Ethernet	10M/100M Ethernet	/	
Instalacja	Plug and Play	Mocowanie na śruby	Plug and Play
Wskaźnik	Wskaźnik diodowy	/	Wskaźnik diodowy
Wymiary (szer. × wys. × gł., mm)	48*119*32	65*72*40	49*96*32
Ciężar (g)	106	42	59
Stopień ochrony	IP65	IP65	IP65
Pobór mocy (W)	5	2	2
Zakres temperatury pracy (°C)	-30~60°C	-30~60°C	-30~60°C
Zakres temperatury przechowywania (°C)	-40~70°C	-40~70°C	-40~70°C
Wilgotność względna	0~100% (bez kondensacji)		
Maks. wysokość pracy n.p.m. (m)	4000	4000	4000
<b>Parametr bezprzewodowy</b>			
Obsługiwane standardy i częstotliwości	802.11b/g/n(2.412G-2.472G)		
Tryb roboczy	AP/STA/AP+STA	AP/STA/AP+STA	AP/STA/AP+STA

## 09 Deklaracja zgodności UE

Firma GoodWe Technologies Co., Ltd. niniejszym oświadcza, że urządzenie komunikacyjne sprzedawane na rynku europejskim spełnia wymagania następujących dyrektyw:

- Dyrektywa o urządzeniach radiowych 2014/53/UE (RED)
- Dyrektywa o ograniczeniu stosowania substancji 2011/65/UE i (UE) 2015/863 (RoHS)
- Dyrektywa dot. zużytego sprzętu elektrycznego i elektronicznego (WEEE) 2012/19/UE
- Rejestracja, ocena, udzielanie zezwoleń i ograniczenia stosowania chemikaliów (WE) nr 1907/2006 (REACH)

Pełny tekst deklaracji zgodności UE można pobrać ze strony: <https://en.goodwe.com>.

## 08 Dados técnicos

PT

Modelo	Wi-Fi/LAN Kit	Wi-Fi Box	Wi-Fi Kit
<b>Dados gerais</b>			
N.º máx. de inversores suportados	1	1	1
Interface de ligação	USB	5 pinos	USB
Interface Ethernet	Ethernet 10M/100M	/	
Instalação	Plug and Play	Fixação com parafusos	Plug and Play
Indicador	Indicador LED	/	Indicador LED
Dimensões (LxAxP mm)	48x119x32	65x72x40	49x96x32
Peso (g)	106	42	59
Classificação da proteção contra elementos exteriores	IP65	IP65	IP65
Consumo de energia (W)	5	2	2
Intervalo de temperaturas de operação (°C)	-30~60 °C	-30~60 °C	-30~60 °C
Intervalo de temperaturas de armazenamento (°C)	-40~70 °C	-40~70 °C	-40~70 °C
Umidade relativa	0-100% (sem condensação)		
Altitude de operação máxima (m)	4000	4000	4000
<b>Parâmetro da rede sem fios</b>			
Normas e frequências suportadas	802.11b/g/ n(2.412G-2.472G)	802.11b/g/ n(2.412G-2.472G)	802.11b/g/ n(2.412G-2.472G)
Modo de funcionamento	AP/STA/AP+STA	AP/STA/AP+STA	AP/STA/AP+STA

## 09 Declaração de conformidade da UE

PT

GoodWe Technologies Co., Ltd. declara pela presente que o aparelho de comunicação vendido no mercado europeu cumpre os requisitos das seguintes diretivas:

- Diretiva de equipamento de rádio 2014/53/UE (DER)
- Diretiva relativa à restrição do uso de substâncias perigosas 2011/65/UE e (UE) 2015/863 (RoHS)
- Resíduos de equipamentos elétricos e eletrônicos 2012/19/UE
- Registro, Avaliação, Autorização e Restrição de Produtos Químicos (CE) N.º 1907/2006 (REACH)

Para declarações de conformidade mais detalhadas, acesse <https://en.goodwe.com>.

## 08 Date tehnice

RO

Model	Wi-Fi/LAN Kit	Wi-Fi Box	Wi-Fi Kit
<b>Date generale</b>			
Max. invertoare acceptate	1	1	1
Interfața de conexiune	USB	5 pini	USB
Interfață Ethernet	Ethernet 10M/100M	/	
Instalare	Conectează și utilizează	Fixare șurub	Conectează și utilizează
Indicator	Indicator LED	/	Indicator LED
Dimensiuni (L x H x A)	48*119*32	65*72*40	49*96*32
Greutate (g)	106	42	59
Grad de protecție contra penetrațiilor	IP65	IP65	IP65
Consum de putere (W)	5	2	2
Interval de temperaturi de lucru (°C)	-30~60 °C	-30~60 °C	-30~60 °C
Interval de temperaturi de depozitare (°C)	-40~70 °C	-40~70 °C	-40~70 °C
Umiditate relativă	0-100% (fără condens)		
Altitudine max. de lucru (m)	4000	4000	4000
<b>Parametru Wireless</b>			
Standarde și frecvențe acceptate	802.11b/g/n(2.412G-2.472G)		
Modul de funcționare	AP/STA/AP+STA	AP/STA/AP+STA	AP/STA/AP+STA

## 09 Declarație de conformitate UE

RO

GoodWe Technologies Co., Ltd. prin prezenta declară că dispozitivul de comunicație wireless comercializat pe piața europeană respectă cerințele următoarelor directive:

- Directiva 2014/53/UE privind echipamentele radio (RED)
- Directiva 2011/65/UE și 2015/863/UE privind restricționarea substanțelor periculoase (RoHS)
- Directiva 2012/19/UE privind deșeurile de echipamente electrice și electronice
- Înregistrarea, evaluarea, autorizarea și restricționarea produselor chimice (CE) nr. 1907/2006 (REACH)

Pentru declarații de conformitate mai detaliate, vizitați <https://en.goodwe.com>.

## 08 Technické údaje

**SK**

Model	Wi-Fi/LAN Kit	Wi-Fi Box	Wi-Fi Kit
<b>Všeobecné údaje</b>			
Meniče napätia	1	1	1
Rozhranie pripojenia	USB	5 pinov	USB
Ethernet rozhranie	10M/100M Ethernet	/	
Inštalácia	Technológia Plug and Play	Upevnenie na skrutky	Technológia Plug and Play
Indikátor	LED indikátor	/	LED indikátor
Rozmery (Š×V×D mm)	48*119*32	65*72*40	49*96*32
Hmotnosť (g)	106	42	59
Stupeň krytia	IP65	IP65	IP65
Spotreba energie (W)	5	2	2
Rozsah prevádzkovej teploty (°C)	-30~60°C	-30~60°C	-30~60°C
Rozsah skladovacej teploty (°C)	-40~70°C	-40~70°C	-40~70°C
Relatívna vlhkosť	0~100% (bez kondenzácie)		
Max. prevádzková nadmorská výška (m)	4 000	4 000	4 000
<b>Bezdrôtový parameter</b>			
Podporované normy a frekvencie	802,11b/g/n(2,412G-2,472G)		
Prevádzkový režim	AP/STA/AP+STA	AP/STA/AP+STA	AP/STA/AP+STA

## 09 Vyhlásenie EÚ o zhode

**SK**

Spoločnosť GoodWe Technologies Co., Ltd. týmto prehlasuje, že komunikačné zariadenie predávané na európskom trhu spĺňa požiadavky nasledujúcich smerníc:

- Nariadenie o rádiových zariadeniach (RED) 2014/53/EÚ
- Nariadenie o obmedzení používania nebezpečných látok (RoHS) 2011/65/EÚ a o
- odpade z elektrických a elektronických zariadení 2012/19/EÚ
- Nariadenie EP a Rady (ES) č. 1907/2006 o registrácii, hodnotení, autorizácii a obmedzovaní chemických látok (REACH)

Podrobnejšie vyhlásenia o zhode nájdete na stránke <https://en.goodwe.com>.

## 08 Tehnični podatki

SL

Model	Wi-Fi/LAN Kit	Wi-Fi Box	Wi-Fi Kit
<b>Splošni podatki</b>			
Maks. Pretvornik podprt	1	1	1
Povezovalni vmesnik	USB	5 Pin	USB
Vmesnik Ethernet	10M/100M Ethernet	/	
Namestitev	Priključi in igray	Vijačna pritrditev	Priključi in igray
Indikator	LED Indikator	/	LED Indikator
Dimenzije (Š×V×G mm)	48*119*32	65*72*40	49*96*32
Teža (g)	106	42	59
Stopnja zaščite pred vdori	IP65	IP65	IP65
Poraba energije (W)	5	2	2
Območje delovne temperature (°C)	-30~60°C	-30~60°C	-30~60°C
Temperaturno območje shranjevanja (°C)	-40~70°C	-40~70°C	-40~70°C
Relativna vlažnost	0-100% (brez kondenzacije)		
Največja delovna nadmorska višina (m)	4000	4000	4000
<b>Brezžični parameter</b>			
Podprti standardi in frekvence	802,11b/g/n(2,412G-2,472G)		
Način delovanja	AP/STA/AP+STA		

## 09 Izjava EU o skladnosti

SL

Podjetje GoodWe Technologies Co., Ltd. izjavlja, da je komunikacijska naprava, ki se prodaja na evropskem trgu, skladna z zahtevami naslednjih direktiv:

- Direktiva o radijski opremi 2014/53/EU (RED)
- Direktiva o omejevanju uporabe nevarnih snovi 2011/65/EU in (EU) 2015/863 (RoHS)
- Direktiva o odpadni električni in elektronski opremi 2012/19/EU
- Uredba o o registraciji, evalvaciji, avtorizaciji in omejevanju kemikalij (EC) No 1907/2006 (REACH)

Za podrobnejše informacije glede skladnosti obiščite <https://en.goodwe.com>.

## 08 Tekniska data

SV

Modell	Wi-Fi/LAN Kit	Wi-Fi Box	Wi-Fi Kit
<b>Allmänna data</b>			
Max. växelriktare som stöds	1	1	1
Anslutningsgränssnitt	USB	5 stift	USB
Ethernet-gränssnitt	10M/100M Ethernet	/	
Installation	Plug-and-Play	Skruvmontering	Plug-and-Play
Indikator	LED-indikator	/	LED-indikator
Dimensioner (B × H × D mm)	48*119*32	65*72*40	49*96*32
Vikt (g)	106	42	59
Kapslingsklassning	IP65	IP65	IP65
Strömförbrukning (W)	5	2	2
Drifttemperaturintervall (°C)	-30~60 °C	-30~60 °C	-30~60 °C
Förvaringstemperaturintervall (°C)	-40~70 °C	-40~70 °C	-40~70 °C
Relativ luftfuktighet	0-100 % (ej kondenserande)		
Max. användningshöjd (m)	4000	4000	4000
<b>Trådlös parameter</b>			
Standarder och frekvenser som stöds	802.11B/g/n(2,412 G-2,472 G)		
Driftläge	AP/STA/AP+STA		

## 09 EU-försäkran om överensstämmelse

SV

GoodWe Technologies Co., Ltd. intygar härmed att kommunikationsenheten som säljs på den europeiska marknaden uppfyller kraven i följande direktiv:

- Radioutrustningsdirektivet 2014/53/EU (RED)
- Direktivet om begränsningar av farliga ämnen 2011/65/EU och (EU) 2015/863 (RoHS)
- Direktivet om avfall från elektrisk och elektronisk utrustning 2012/19/EU
- Direktivet om registrering, utvärdering, tillstånd och begränsningar av kemiska ämnen (EG) nr 1907/2006 (REACH)

För mer detaljerad information om överensstämmelse, besök <https://en.goodwe.com>.



Official Website

## GoodWe Technologies Co., Ltd.

---

 No. 90 Zijin Rd., New District, Suzhou, 215011, China

 [www.goodwe.com](http://www.goodwe.com)

 [service@goodwe.com](mailto:service@goodwe.com)



340-00651-05

Local  
Contacts