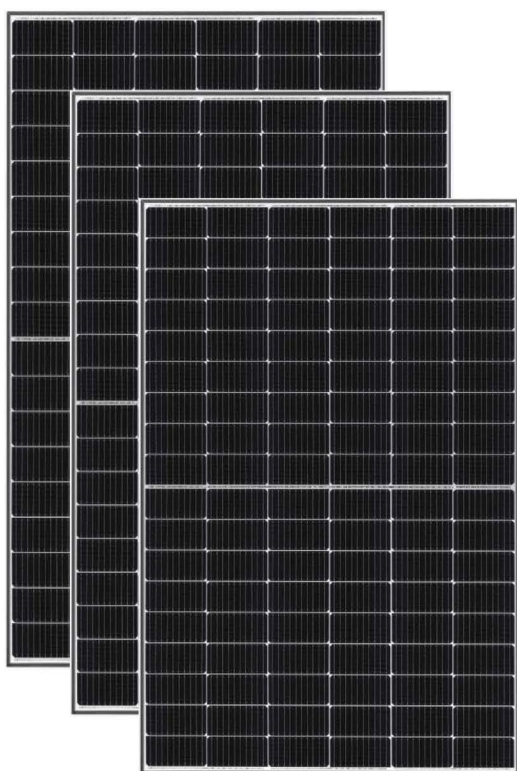


# Q2 2024 April Special



## 6.64kw Residential Solar System



Fully Installed  
(Standard Installation\*)

Original price \$4,480\*

# \$3,XXX

Out of Pocket Price\*

(After STC incentive)

\*Standard Installation included and limited to

1. Single - storey or two - storey house (up to 6 meters high)
2. Tin or Tile roof
3. Single - phase meter
4. Total of 64 STCs (Approx. Value \$3,666)
5. Service area limited to South - East Queensland only\*
6. 10 Years Workmanship Warranty



TW415MAP-108-HS

- Ultra Low Performance degradation
- Maximum power up to 420+W
- High module quality ensure long-term reliability
- Excellent outdoor power generation performance
- 415 Watts x 16 pieces (6,640 watts)
- 25 Years product and linear power warranty



X1-BOOST-5K-G4

- X1-BOOST G4 5.0 x 1 Unit
- Remote upgrade and maintenance
- Max efficiency up to 98%
- Easy to install and set up
- WIFI and Online monitoring capability
- 12 Years product warranty



- \* Extra charge will be applied if Installation site exceed 100 km from postcode 4110 (\$1.00 per km extra).
- \* Our goods come with guarantees that cannot be excluded under the Australian Consumer Law. You are entitled to a replacement or refund for a major failure and for compensation for any other reasonably foreseeable loss or damage. You are also entitled to have goods repaired or replaced if the goods fail to be of acceptable quality and the failure does not amount to a major failure.
- \* Price is after Small Scale Technology Certificates (STCs), the STCs have been assigned to Eversolar 2.0 Pty Ltd or its agent, subject to approval from power distributor.
- \* T&C applied, for more information please refer to our website <https://eversolar.com.au/terms-conditions/>

# Q2 2024 April Special



## 10.375kw

## Fully Installed (Standard Installation\*)

## Residential Solar System

Original price ~~\$5,980\*~~

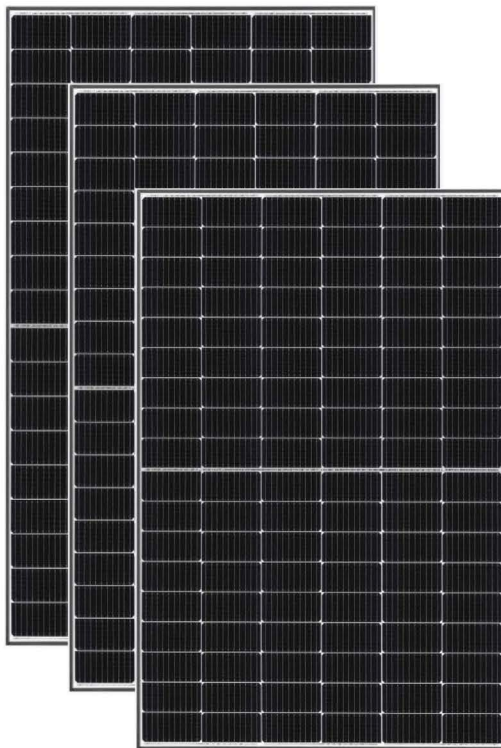
# \$4,XXX

## Out of Pocket Price\*

(After STC incentive)

\*Standard Installation included and limited to

1. Single - storey or two - storey house (up to 6 meters high)
2. Tin or Tile roof
3. Single - phase meter
4. Total of 100 STCs (Approx. Value \$3,900)
5. Service area limited to South - East Queensland only\*
6. 10 Years Workmanship Warranty



TW415MAP-108-HS

- Ultra Low Performance degradation
- Maximum power up to 420+W
- High module quality ensure long-term reliability
- Excellent outdoor power generation performance
- 415 Watts x 25 pieces (10,375 watts)
- 25 Years product and linear power warranty



X1-8.0-T-N

- X1-8.0-T-N x 1 Unit
- Remote upgrade and maintenance
- Max efficiency up to 97.4%
- SolaX Smart meter included
- WIFI and Online monitoring capability
- 12 Years product warranty



- \* Extra charge will be applied if Installation site exceed 100 km from postcode 4110 (\$1.00 per km extra).
- \* Our goods come with guarantees that cannot be excluded under the Australian Consumer Law. You are entitled to a replacement or refund for a major failure and for compensation for any other reasonably foreseeable loss or damage. You are also entitled to have goods repaired or replaced if the goods fail to be of acceptable quality and the failure does not amount to a major failure.
- \* Price is after Small Scale Technology Certificates (STCs), the STCs have been assigned to Eversolar 2.0 Pty Ltd or its agent, subject to approval from power distributor.
- \* T&C applied, for more information please refer to our website <https://eversolar.com.au/terms-conditions/>



# Q2 2024 April Special



# 13.28kw

## Residential Solar System

### Fully Installed (Standard Installation\*)

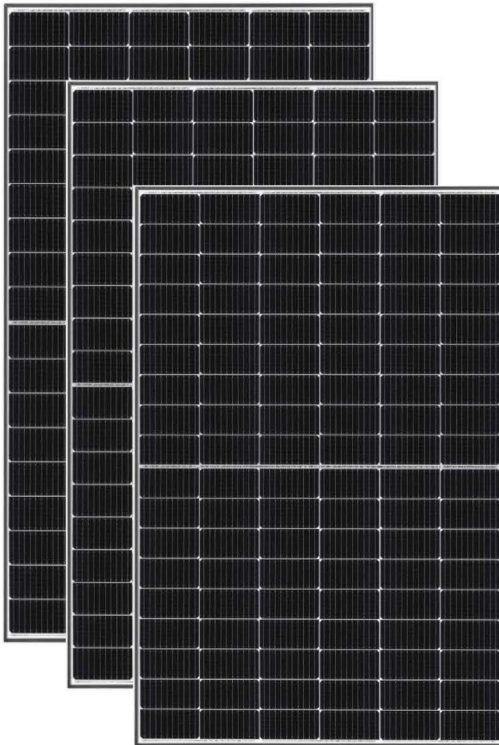
Original price \$7,580\*

# \$5,XXX

### Out of Pocket Price\* (After STC incentive)

\*Standard Installation included and limited to

1. Single - storey or two - storey house (up to 6 meters high)
2. Tin or Tile roof
3. Three - phase meter
4. Total of 128 STCs (Approx. Value \$4,992)
5. Service area limited to South - East Queensland only\*
6. 10 Years Workmanship Warranty



**TW415MAP-108-HS**

- Ultra Low Performance degradation
- Maximum power up to 420+W
- High module quality ensure long-term reliability
- Excellent outdoor power generation performance
- 415 Watts x 32 pieces (13,280 watts)
- 25 Years product and linear power warranty



**X3-PRO-10K G2**

- X3-PRO G2 10,000W x 1 Unit
- Remote upgrade and maintenance
- Max efficiency up to 98.2%
- SolaX Smart meter included
- WIFI and Online monitoring capability
- 10 Years product warranty



- \* Extra charge will be applied if Installation site exceed 100 km from postcode 4110 (\$1.00 per km extra).
- \* Our goods come with guarantees that cannot be excluded under the Australian Consumer Law. You are entitled to a replacement or refund for a major failure and for compensation for any other reasonably foreseeable loss or damage. You are also entitled to have goods repaired or replaced if the goods fail to be of acceptable quality and the failure does not amount to a major failure.
- \* Price is after Small Scale Technology Certificates (STCs), the STCs have been assigned to Eversolar 2.0 Pty Ltd or its agent, subject to approval from power distributor.
- \* T&C applied, for more information please refer to our website <https://eversolar.com.au/terms-conditions/>

# Q2 2024 April Special



# 13.28kw

## Residential Solar System

### Fully Installed (Standard Installation\*)

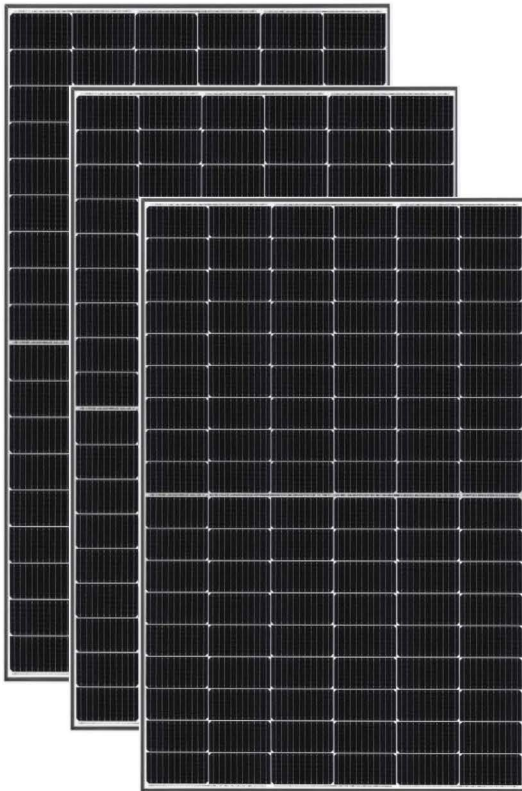
Original price \$7,580\*

# \$5,XXX

### Out of Pocket Price\* (After STC incentive)

\*Standard Installation included and limited to

1. Single - storey or two - storey house (up to 6 meters high)
2. Tin or Tile roof
3. Three - phase meter
4. Total of 128 STCs (Approx. Value \$4,992)
5. Service area limited to South - East Queensland only\*
6. 10 Years Workmanship Warranty



TW415MAP-108-HS

- Ultra Low Performance degradation
- Maximum power up to 420+W
- High module quality ensure long-term reliability
- Excellent outdoor power generation performance
- 415 Watts x 32 pieces (13,280 watts)
- 25 Years product and linear power warranty



GW10K-MS

- GW10K-MS x 1 Unit
- AC overloading up to 10%
- DC oversizing up to 100%
- Max efficiency up to 97.7%
- WIFI and Online monitoring capability
- 10 Years standard product warranty (extendable)

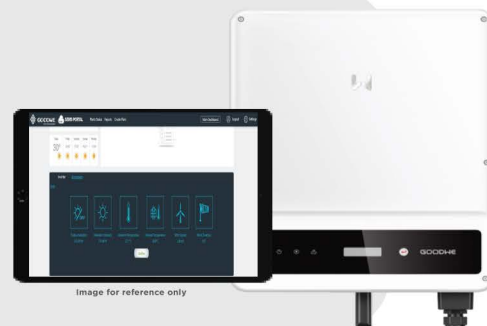


Image for reference only

- \* Extra charge will be applied if Installation site exceed 100 km from postcode 4110 (\$1.00 per km extra).
- \* Our goods come with guarantees that cannot be excluded under the Australian Consumer Law. You are entitled to a replacement or refund for a major failure and for compensation for any other reasonably foreseeable loss or damage. You are also entitled to have goods repaired or replaced if the goods fail to be of acceptable quality and the failure does not amount to a major failure.
- \* Price is after Small Scale Technology Certificates (STCs), the STCs have been assigned to Eversolar 2.0 Pty Ltd or its agent, subject to approval from power distributor.
- \* T&C applied, for more information please refer to our website <https://eversolar.com.au/terms-conditions/>

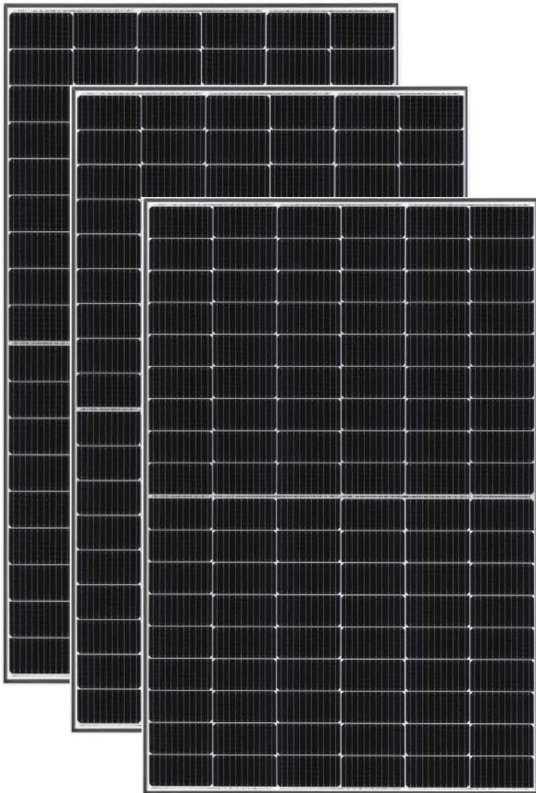


# Q2 2024 April Special



# 19.92kW

## Residential Solar System



Fully Installed  
(Standard Installation\*)

Original price \$9,280\*

# \$7,XXX

Out of Pocket Price\*  
(After STC incentive)

\*Standard Installation included and limited to

1. Single - storey or two - storey house (up to 6 meters high)
2. Tin or Tile roof
3. Three - phase meter
4. Total of 192 STCs (Approx. Value \$7,488)
5. Service area limited to South - East Queensland only\*
6. 10 Years Workmanship Warranty



TW415MAP-108-HS

- Ultra Low Performance degradation
- Maximum power up to 420+W
- High module quality ensure long-term reliability
- Excellent outdoor power generation performance
- 415 Watts x 48 pieces (19,920 watts)
- 25 Years product and linear power warranty



X3-PRO 15K G2

- X3-PRO G2 15,000W x 1 Unit
- Remote upgrade and maintenance
- Max efficiency up to 98.3%
- SolaX Smart meter included
- WIFI and Online monitoring capability
- 10 Years product warranty



- \* Extra charge will be applied if Installation site exceed 100 km from postcode 4110 (\$1.00 per km extra).
- \* Our goods come with guarantees that cannot be excluded under the Australian Consumer Law. You are entitled to a replacement or refund for a major failure and for compensation for any other reasonably foreseeable loss or damage. You are also entitled to have goods repaired or replaced if the goods fail to be of acceptable quality and the failure does not amount to a major failure.
- \* Price is after Small Scale Technology Certificates (STCs), the STCs have been assigned to Eversolar 2.0 Pty Ltd or its agent, subject to approval from power distributor.
- \* T&C applied, for more information please refer to our website <https://eversolar.com.au/terms-conditions/>